

PART OF S.W. 1/4 OF SEC. 23, T.5N., R.1W., S.L.B. & M.
EASTWOOD SUBDIVISION NO. 7

151

LOTS 96-104 & 115-119

TAXING UNIT: 159

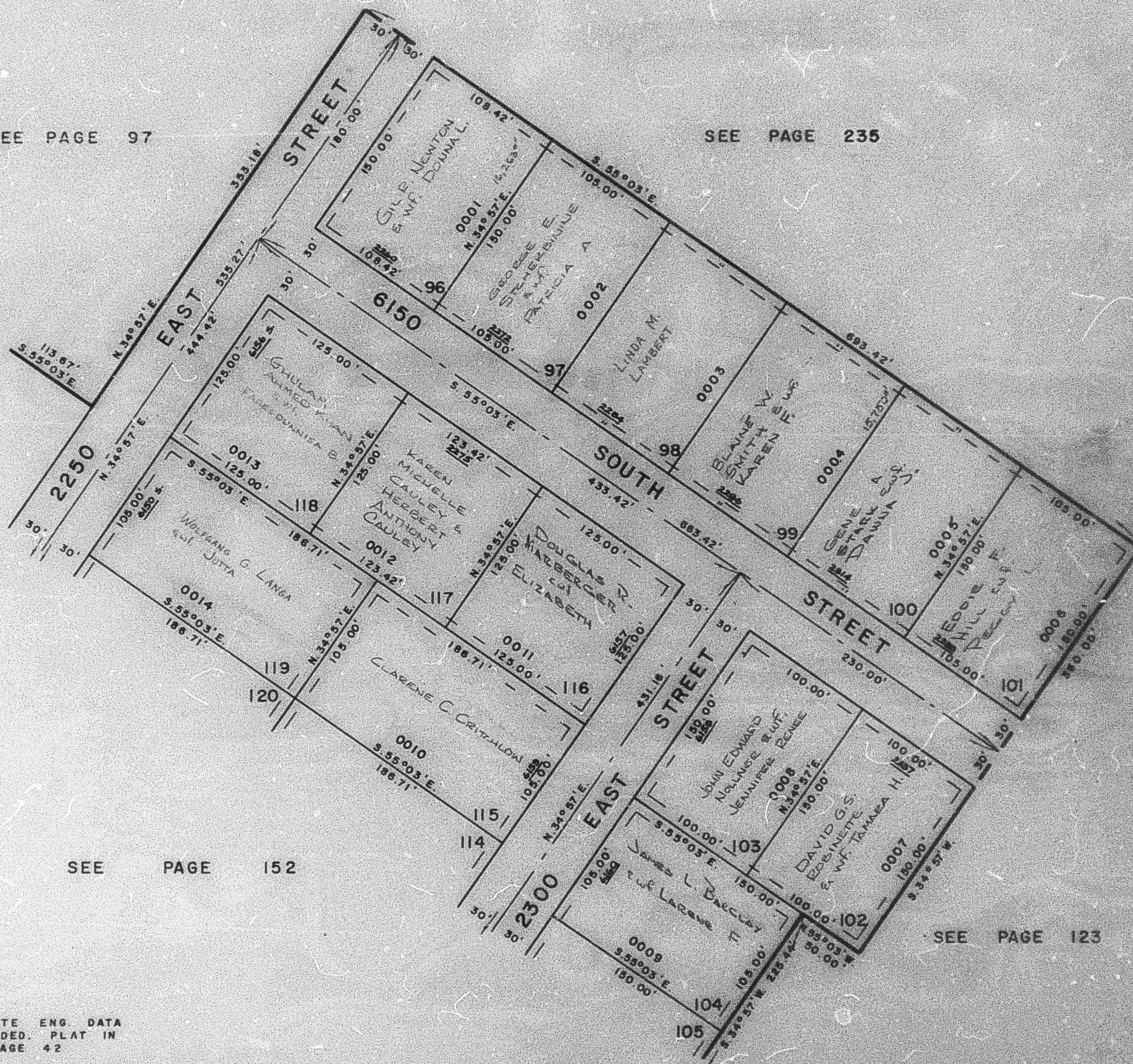
IN WEBER COUNTY

PREFIX: 07-151

SCALE 1" = 60'

SEE PAGE 97

SEE PAGE 235



SEE PAGE 152

SEE PAGE 123

FOR COMPLETE ENG. DATA
 SEE ORIG. DED. PLAT IN
 BOOK 17, PAGE 42

7' UTILITY & DRAINAGE EASEMENTS
 EACH SIDE OF PROPERTY LINE AS
 INDICATED BY DASHED LINES